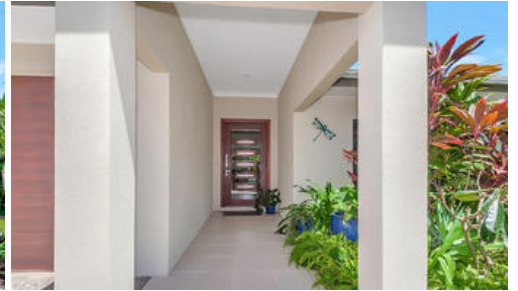




10 Litara Ct, Palm Cove



Stylish Stunner

From the moment you walk through the extra wide doorway to this stunning home it quickly becomes apparent that this home has been built to embrace the tropical lifestyle with an emphasis on quality finishes and stylish entertaining options.

With a generous sized entertainers kitchen at the center of a large open plan living area, the home showcases a perfect blend of indoor and outdoor living with a smooth flow from the large open plan living space to the wonderful outdoor entertaining area overlooking the stunning in-ground pool.

Just some of the many features of this stunning home include:

- 3 extra large bedrooms including a wonderful Master Retreat with huge double vanity ensuite and walk in robe
- Air conditioning to living area and bedrooms with high ceilings and great air flow throughout
- Entertainers kitchen featuring island bench with waterfall stone tops
- Double garage with internal access
- 5.12kw Hush Energy solar and solar hot water

The above information provided has been furnished to us by the vendor/s. We have not verified whether or not that information is accurate and do not have any belief in one way or the other in its accuracy. We do not accept any responsibility to any person for its accuracy and do no more than pass it on. All interested parties should make and rely upon their own inquiries in order to determine whether or not this information is in fact accurate.

 3  2  2 

Price

Mid to High
\$700,000's

Property Type

Residential

Property ID

113

Land Area

555 m2

Agent Details

Paul Blunt - 0422 442 413

Office Details

Smithfield

07 40575454

